



2009 Annual Report

NATIONAL MUSEUM OF FOREST SERVICE HISTORY

A Nonprofit 501C(3) Corporation

October 2009

ANNUAL MEMBERSHIP MEETING ARCHITECTURAL AND EXHIBIT PLANS UNVEILED September 8, 2009

The National Museum of Forest Service History (NMFHS) unveiled its architectural and exhibit concept plans for its permanent home in Missoula at its Annual Members' Meeting September 8. The meeting, attended by over 300 persons, was held in conjunction with the U.S. Forest Service Reunion in Missoula, MT. The \$12.7 million, 30,000-square-foot building plans were also presented to members, media and invited community leaders at a September 8, noon luncheon at the building site. Architect Stan Zimet discussed design considerations for the building at the September 9th Reunion banquet.

The plan envisions a building



Bill Shirley, Karl Davidson and Fred & Marty Kaiser renew friendships

strengthened by tall timbers of 24 tree species, each with a story to tell. A facility constructed as a model of energy efficiency and LEED certified. A dynamic theater and interactive exhibits tell the story of the Forest Service and its partners, engaging you from the moment you step inside. Gallery areas are dedicated to traveling and temporary exhibits.

There are classrooms, meeting rooms, and a place for volunteers inside and out.

"Over the course of the Forest Service's first century, there has never been one central repository where artifacts could be stored, preserved and displayed. The National Museum of Forest Service History is that

See MEETING, page 3

Special points of interest:

- Annual meeting raised \$86,000 to match \$50,000 Challenge
- LEED energy efficiency standards now part of building design
- Volunteers obtain timber framing posts for building
- Repository now has over 40,000 objects
- Capital Campaign prepares for major effort in 2010

OZ Fundraising Challenge Successful

Stan Zimet, OZ Architects, said for every gift and pledge that we receive during the Forest Service Reunion week, OZ Architects will match it dollar for dollar up to \$50,000. Board Member Lynn Sprague issued the challenge during the Annual Member's Meeting. Board Member Doug Leisz lead the effort to buttonhole members

during the week. Board Member Dave Scott worked with the Old Smokey's Board to arrange the \$5,000 donation.

The challenge resulted in \$77,000 donations and another \$9,000 pledged to more than match the \$50,000 from OZ Architects.



Bill Shenk (left) presents the Old Smokey's building fund donation to President Gray Reynolds

Inside this issue:

CARE Programs	2
Awards	4
Agreement Signed	4
Road Construction	5
Stream Restoration	5
Building Design	6
Capital Campaign	7
Financials	9
Board of Directors	10

Mission:

To preserve the history of the U. S. Forest Service and to interpret the conservation story, giving due consideration to the roles and partnerships that have enriched the forest and grasslands of the United States, and to present this historical information with integrity.

Goals:

- Encourage public awareness of the history of conservation of all state, private, and federal lands across America.
- Construct the National Conservation Legacy and Education Center (Center) that will become a focal point for Forest Service history.
- Exhibits and archives are accessible from the Internet.
- Become an affiliate of the Smithsonian Institution.
- Provide conservation education to students and adults.
- Support Forest Service units and other forest history efforts nationally.

Vision:

National Museum of Forest Service History is an institution that will serve to manage, protect, and interpret the 100+ year history of the Forest Service for decades to come. The service, which we provide in supporting education, research, and understanding of conservation in the United States and indeed the world, will have increasing value and importance in the years ahead.

We will work in partnership with the Forest Service and other cooperators ,such as the Forest History Society, which will be invaluable in the years ahead to not only the agency, but the public as well.

CARE PROGRAMS

The Museum continues its CARE Program (Collection, Archives, Research and Education Programs). Our programs now reach every part of the country. In just the past three years, the Museum has assisted researchers, teachers, foresters, volunteers and organizations in 47 states with research, documentation, objects on-loan, artifact restoration and publications. In 2008, the Museum introduced a traveling exhibit program to support the interpretative outreach of the Forest Service and the communities it serves.

The Speakers and Writers Bureau responds to the demand for presentations to communities and conferences and requests for articles on the history of the US Forest Service. Since July 2008, Executive Director Dave Stack made presentations on the history of forest conservation and the Forest Service before the Missoula Chapter of the Society of American Foresters, the University of Montana History Group and the National Forest Home Owners Association Seattle, WA meeting. The Museum's educational message was presented during the National Convention of the Society of American Foresters in Reno, NV and Orlando, FL.

The Museum Repository has over 40,000 items ranging from tiny label buttons to a Tucker SnoCat (photograph right). Ranger Diaries in the repository provide a rich historical insight into the challenges facing employees as they carried out the Forest Service programs. Curator Beth Humble, with assistance from volunteers, has carefully cataloged historic papers, books, photographs and objects given to the Museum.

Cataloging is current for items donated directly to the museum since the early 1990s. We have a big job ahead to catalog the large Harvey Mack Collection, Forest Service property under the Museum's care. Almost 22,000 items are cataloged: Artifact Objects 4,359; Photographs 7,795, Archive Folders 3,191 and Library (published books, Research reports etc.) 6,563. Over 7,000 names of individuals are indexed with the historical records.



Tucker SnoCat

2009 Annual Report

MEETING, continued from page 1

place,” said Gray Reynolds, President, National Museum of Forest Service History.

“The Forest Service is proud of our rich history and we are eager to share this history with the public. The lessons we have learned since our inception in 1905 will help our nation tackle current and future challenges such as climate change, land restoration and water conservation. “The National Museum of Forest Service History will be

a wonderful repository of the Forest Service’s rich history and commitment to managing our nation’s precious natural resources,” said Forest Service Chief Tom Tidwell.

As a showcase for its collection of more than 40,000 objects, the Center will encourage visitors to explore the cultural, ecological, economic, political, and social history of the lands and people that have defined the nation and given meaning to

the term conservation.

“The best museums of history — through their artifacts and displays — are able to transport us to another time and place. They are designed to help us better understand the people and events that have shaped different aspects of our history and culture. The National Museum of Forest Service History has the potential to become one of those exemplary institutions,” said James Deutsch, Program Curator,

Center for Folklife and Cultural Heritage, Smithsonian Institution, Washington, DC.

People were invited to tour the site September 8 and 11 to view the completed site improvements, posters and architectural drawings of the planned building. Board members were on hand to discuss the plans and answer questions. A temporary exhibit in the Bungalow Ranger Station cabin, at the museum site, was open to visitors.



Tom Tidwell, Chief, and Gray Reynolds, Museum President talk before noon luncheon



Missoula Mayor John Engen, spoke at both events



Jim Webb and Andrew Cainion meet during the reception



Dr. Alex Apostle, Missoula Superintendent of Schools, speaking at the noon luncheon



James Deutsch, Smithsonian Institution, and Dave Wanzanried, Montana State Senator, speakers at noon luncheon and Annual Meeting



Dick Bacon, Board Member, talks with tour group at building site

Awards Presented at Annual Meeting

Gary G. Brown, former Montana State Forester and past Museum President, was presented *The National Museum of Forest Service History Founder's Award* by Vice President Dave Stack for his inspiring leadership in working with others to establish the Museum as a nonprofit organization and lay the groundwork for building a permanent home in Missoula.

Enterprise Rent-A-Car of St Louis Missouri received *The National Museum of Forest Service History Conservation Legacy Award* for their 50-year commitment to plant 50 Million Trees in partnership with the National Arbor Day Foundation. Since the program launched in 2006, 3 million trees have been planted in National Forest and around the globe. Board Member Tom Thompson presented the award to

Lee Broughton, Enterprise Rent-A-Car Director of Sustainability.



Gary G. Brown accepting Founder's Awards from Dave Stack, Vice President



Lee and Chrissy Broughton after receiving the Conservation Legacy Award

Forest Service Agreement Signed

Tom Tidwell, Forest Service Chief, and Gray Reynolds, Museum President, signed an agreement on September 8, 2009 to formalize the partnership between the two organizations. This agreement replaces one signed in 2003.

The purpose of this agreement is to continue communications, coordination, and cooperation between the National Museum of Forest Service History and the Forest Service that will promote common interests by establishing a national facility to

preserve, interpret and inform people of the history of the Forest Service. The National Conservation legacy and Education Center will exhibit the history of conservation in the United States by illustrating the historical and contemporary activities of the Forest Service.

FORESTS AND
RANGELANDS
COVER 64% OF
THE UNITED
STATES

Conceptual Interpretive Plan

The plan was completed in January 2008 for the indoor and outside exhibits. Split Rock Studios of Minnesota was our consultant.

Our Approach:

Transport visitors to times and places of importance through stylized environments, stories, artifacts, and interactive activities. The focus will be first on **people** and second on **the organization**. Exhibits will use the stories of the people to engage visitors in the story of **conservation** and **stewardship**. The building itself will be an exhibit to interpret the role of the Forest Service's Forest Products Laboratory and its partners in development of the building materials and the environmental benefits of green buildings.

Distinguishing features:

- ◆ Base its interpretation on a large, inclusive perspective; give the big picture
- ◆ Interpret a national institution

- ◆ Create an interactive experience that allows visitors to connect with conservation history
- ◆ Exhibits interest all ages
- ◆ Display significant artifacts

- ◆ Become a major supporter of other efforts and related local, regional, and national facilities

Building Site Development

Infrastructure work continued in 2009 on the 36-acre National Conservation Legacy and Education Center building site located adjacent to the Missoula International Airport and the Forest Service's Smokejumpers Base, Fire Sciences Laboratory and the Technology and Development Center.

Road and Parking Construction — Construction started on May 18 and was substantially completed in six weeks. Only the sub-base was constructed at this time. Nelcon Inc completed the work for \$90,416. The contractor removed the topsoil for later use and placed a Geotextile fabric and a 12 inch layer of rock. The work was supported by a Forest Service grant. Parking for 37 cars and 10 large vehicles will be available. Following building construction curbs, sidewalks and asphalt paving will complete the project. The photograph shows a truck delivering rock for the two-lane access road. The contractor delivered 3,000 cubic yards of rock to the job site.



Stream Restoration — Butler Creek passes thru the building site. The seasonal creek splits into east and west branches a short distance after entering the site. The NMFSH and the Forest Service developed a *partnership project* to ensure the predicted 100-year flood event would not impact the NMFSH Center or adjacent Forest Service building sites. The NMFSH was responsible for engineering design and stream flow modeling. The Forest Service was responsible for construction. With the Northern Region's Hydrologist and others, we identified the east branch as the historical channel and stream flow modeling confirmed the historical channel would contain the 100-year flood event if the earthen berm blocking the channel was removed. The creek was apparently diverted many years ago by a private landowner for irrigation. The cost to the Museum's was \$19,700.

The middle photograph shows the construction equipment adjacent to the constructed channel. Hardwood saplings from the site were saved and replanted. Wood chips were placed for erosion control (lower photograph). The contractor completed work in late September.



Work completed prior to 2009:

Sewer and Water Utilities — 1,400 feet of sewer and water lines to serve the building were constructed in 2006. Total project cost including design was \$450,000. The service lines are connected into the Missoula municipal systems.

Bungalow Ranger Station Building — The building was originally located on the Clearwater National Forest, Idaho. The small sawn log building was the residence for the ranger and his family.

The station was so isolated, all employees moved to town for the winter. The Forest Service closed the station. NMFSH volunteers reconstructed the building in 2000 to 2003.

L-4 Lookout — The newest structure on campus is the Fire Lookout. Based on 1930 Forest Service plans, it was originally constructed as a display for the Smithsonian's Folk Life Festival in celebration of the Forest Service Centennial in 2005. Reconstructed adjacent to the

future Center, the Lookout serves as an iconic symbol of individual heroism in wildfire management and a reminder that the extreme forces of nature and behavior of mankind can in an instant dramatically change the landscape.

Enhancements — Other site improvements included planting of screening trees, Champion trees, irrigation system and a water well.

\$617,000 has been invested in infrastructure construction and planning.

Center Building Design

Significant advances were made in 2009 to improve the building design of the National Conservation Legacy and Education Center.

Architect Stan Zimet, OZ Architects, developed plans to daylight the lower level office, classrooms and library areas. An outdoor amphitheater stage, adjacent to the classrooms, was incorporated into the design. The re-design improved traffic flows and increase storage space.

The second advance was the decision to register the project with the U.S. Green Building Council and became a candidate for LEED Gold Certification.

LEED or Leadership in Energy and Environmental Design is an economic and environmentally friendly green building process. The building design was always aimed at energy efficiency, but LEED certification will formerly recognize our efforts to construct a “green building.”

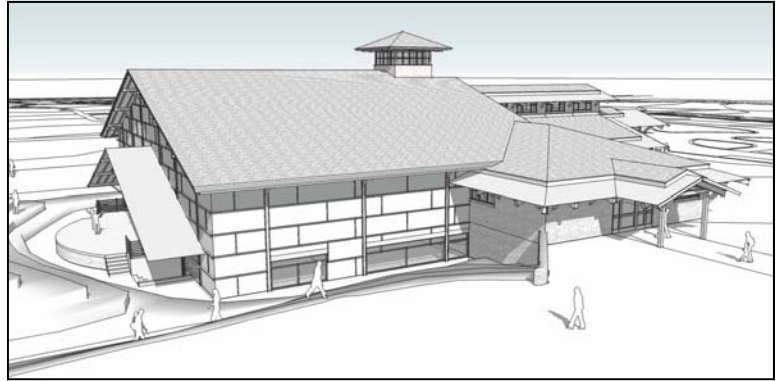
Kelly Karmel, our LEED consultant, was hired to advise us and work with the Architect Stan Zimet. DC Engineering has completed the initial base line energy modeling. There is over a 40% energy savings in the current design.

Benefits of a Green Building

Environmental: Improve air and water quality and Reduces solid waste

Economic: Reduces operating costs and Improves employee productivity and satisfaction

Health and Community: Improves air, thermal, and acoustic environments and Enhances occupant comfort and health



Energy Efficiency Features Planned:

Insulated Concrete Forms (ICF), Structural Insulated Panels (SIP) walls and roof, Ground source heat pumps for heating and cooling, Recycled materials; e.g. Blackfoot River sinker logs, Local building materials, e.g. Small Diameter Wood Truss, HVAC System will recover heat from exhaust air, Roof reflects summer heat, Lighting designed to reduce energy use and light pollution, Construction Waste Recycling, Low volatile materials – adhesives, paints etc. and Water efficient landscaping & restrooms.



Timber Posts for Lobby

Timber framing posts for the lobby will come from National Forests, Experimental Forests, State Forests and Tree Farms. The geographically diverse species will tell the story how forests supported the development of America. Visitors and students will read the plaque on each post and a companion brochure.

In 2009 several sawmills and many volunteers worked to harvest trees and manufacture the posts. Walkins-Shepard, a Missoula based trucking company, hauled the timber posts to Brian Leisz's Fall Creek Timber Framers in Troy, Montana. Brian is our technical advisor and will ready the timbers for construction.

State	Source	Species
Alaska	Tongass NF	Alaskan Yellow Cedar
Arkansas	Ozark NF	Short Leaf Pine
California	Hughes Family Tree Farm	Sugar Pine and Incense Cedar
Colorado	Fraser Experimental Forest	Engelmann Spruce
Florida	Blackwater River State Forest	Long Leaf Pine, Atlantic White Cedar, and Red Oak
Idaho	Payette NF	Western Larch
Indiana	Hoosier NF	Yellow Poplar
Louisiana	Kistachie NF	Bald Cypress
Michigan	Huron–Manistee NF	White Ash
Minnesota	Chippewa NF	Red Pine
Minnesota	Superior NF	Aspen
New Hampshire	Tom Thompson Tree Farm	Red Spruce and Sugar Maple
New Hampshire	White Mountain NF	Yellow Birch
Pennsylvania	Allegheny NF	Black Cherry
South Dakota	Black Hills NF	Ponderosa Pine
Vermont	Green Mountain NF	Sugar Maple
Virginia	G. Washington Jefferson NF's	White Oak
West Virginia	Fernow Experimental Forest	Red Oak and Black Walnut
Wisconsin	Chequamegon – Nicolet NF's	Eastern White Pine

Capital Campaign

In 2009 the Board of Directors hired Liz Madison and Jennifer Flaster as advisors to review and revise the campaign plan, the business plan and campaign case statement. The Board of Directors is reviewing the proposed changes in the campaign plan and other documents. All plans we will be reviewed and approved by year's end. Liz Madison and Jennifer Flaster will continue advising the Board of Directors in 2010.

Potential major donors will be contacted starting late

Gifts

The Museum accepts many different types of gifts for the Capital Campaign:

Cash — Cash and pledges are sent directly to the museum office: Our Tax identification number is 81-0454269.

Stocks and Other Publicly Traded Assets — Donors need to coordinate gift with the museum office.

In-Kind — Professional services, construction materials and furnishings are accepted. The museum office will

2009 and continue through 2010. An experienced grant writer will begin work November 2, 2009. Several major fundraising events are planned. In addition, the Board is scheduling a meeting in the east or south and California to facilitate meetings with potential donors, members and other groups.

The campaign goal has been set at \$12.7 million. A total of \$3.2 million has been raised.

coordinate donations.

Real Estate — Land can be transferred to the museum. The museum will immediately sell the property. We do not accept Charitable Remainder Trusts that require long-term management of real estate.

Planned Giving — Wills and trusts are suitable for contributions to the museum to support on-going operating costs.

Donors are advised to consult with their attorney and tax advisor to ensure compliance with all State and Federal rules regarding charitable donations.

We thank all donors listed below who have generously supported the Capital Campaign. We also thank 196 givers who have generously supported the Capital Campaign with donations less than \$500 and are not listed.

\$500,000 +
USDA Forest Service

\$50,000 - \$74,999
Ted Schlapfer
Boone and Crockett Club
National Wild Turkey Federation
OZ Architects

\$25,000 - \$49,999
Anonymous
Douglas R. Leisz
Clarke Ohrstrom

\$10,000 - \$24,999
Lynn R. Biddison
William M. Cannon
Doug Hayden
Max Peterson
Del Radtke
Robert P. Spivey
Pacific NW F.S. Assoc
Phos-Check

Sierra Pacific Airlines

\$5,000 - \$9,999
Joan Biddison
Edsel L. Corpe
Ed Heilman
Robert Model
John Sandor
John B. Smith
David M. Stack
Vern Sylvester
Aspen Skiing Company
Family Fund
Ben Meadows Company
Big Sky Mobile Catering
DJ&A, P.C. Consulting Engineers
George L. Ohrstrom, Jr.
Foundation
Northern Rocky Mountain
Retirees Assn
Stillwater Mining Company

\$1,500 - \$4,999
Roger R. Bay
J. Lamar Beasley
Chris C. Brown
Denny Bungarz
Bill Cooperrider
James W. Fears
Jerry Gause
David A. Graham
Fred Haeussler
Roger & Nita Hearst
Beryl & Inez Johnston
Pat & Patty Lynch
John Marker
Ronald J. McCormick
Duane Packer
Jack V. Puckett
Gray F. Reynolds
Chris Risbrudt
Ronald A. Schaufler
David W. Scott
Lynn Sprague
Ted C. Stubblefield
Tom Thompson

James F. Torrence
Whit Whitfield
Aero Tech, Inc
Beaudette Consulting Engineers, Inc.
Firewise 2000, Inc
Forestry Suppliers, Inc.
National Ski Areas Assn.
National Smokejumper Assn
Pacific Southwest FSX Club
Ski Apache
Snowbird Renaissance Ctr

\$1,000 - \$1,499
Keith A. Argow
Philip Aune
Richard M. Bacon
Bill Bailey
Richard Baldwin
Herman E. Ball
William J. Barton, Jr.
Jack Blackwell
Dale Bosworth
Glenn S. Bradley

DONORS continued from page 7

\$1,000 - \$1,499

Gary G. Brown
Richard F. Buscher
John F. Butruille
Harry & Myrna Camp
Arthur J. Carroll
Ray & Maxine Connelly
Fred & Cherie Cooper
Glenn A. Cooper
Carol J. Ede
John Emerson
Jack Fisher
Stephen Fitch
Alice & Bob Forbes
Robert S. Gibson
Rita Glazebrook
Mr & Mrs Norman E. Gould
Thomas Hamilton
Tammy & Jim Hanan
Drema A. Harden
Charles Harden
H. Ames Harrison
Lorin & Ina Hearst
David & Elva Jay
David Jolly

\$1,000 - \$1,499

Anne D. Jones
H Fred & Martha Kaiser
Elizabeth J. Kidd
Ted W. Koskella
Lyle Laverty
Jack Lavin
Tom Lennon
Andy Leven
Thomas E. Lewis
Charles Lowrie
Andrew C. Mason
Stephen P. Mealey
Mike Milodragovich
Terry & William Moore
Don Nelson Jr.
Corbin & Erin Newman
Peter Neyhart
John Ohman
Wallace R. Otterson
Donald W. Peterson
Tom Pettigrew
John H. Poppino
Dave & Marlene Radloff

\$1,000 - \$1,499

Robert & Joyce Rehfeld
Earl & Anne Reinsel, Jr.
F. Dale Robertson
Michael J. Rogers
Eldon W. Ross
Jack Saubert
Al Schacht
John Sherrod
Al & Nancy Smith
Arnold F. Swanberg
Robert M. Swinford
Jack Troyer
Douglas G. Turner
W Jane Westenberger
Allan & Joyce West
Dave J. Wright
Bitterroot Trails, LLC
CBP Port of Roosville
ESRI
Rainier Seeds, Inc.
Wildfire

\$500 - \$999

Rolf Anderson
John P. Case
James Caswell
John A. Combes
Gerald J. Coutant
Wally & Shirley Gallaher
Max Green
John R. Hook
Reid Jackson
Mary C. Jennings
Bud Moore
George Olson
Neil Opsal
Dick Pfilf
Tom Schenarts
David B. Trask
Cost Management Engineers, PC
Eastern F.S. Retiree Assn
Oregon Society of American Foresters
Southern Forest Service
Retirees Association

Membership

Membership is open to all individuals, and organizations. There are 758 members, including 145 Life members. Member dues and donations have provided the operational funding to develop plans and put the Capital Campaign on the move. With the web page redesign in 2009, donations and dues may now be paid with a credit card using the Museum web page at www.nmfs-history.net

Life Members

Keith A. Argow
Don Arundell
Philip Aune
Robert D. Averill
Richard M. Bacon
Bill Bailey
Dr. Roger R. Bay
Joan Biddison
Lynn R. Biddison
Jack Blackwell
Barbara Bledsoe
Blaine E. Bloomgren
Dale Bosworth
Glenn S. Bradley
Chris C. Brown
Gary G. Brown
John F. Butruille
William A. Campbell

William M. Cannon
Arthur J. Carroll
James Caswell
John W. Chaffin
Gilbert Churchill
Fred & Cherie Cooper
Bill Cooperrider
Dick Coose
Edsel L. Corpe
Barney A. Coster
Gerald J. Coutant
William Covey
Bjorn Dahl
Mike Dombeck
John Drake
John Emerson
Kenneth Evans
James E. Ficke

Jack Fisher
Stephen Fitch
Alice & Bob Forbes
Bill Gabriel
Larry O. Gadt
Jerry Gause
Rita Glazebrook
Robert Gorsuch
David A. Graham
Max Green
Fred Haeussler
Thomas Hamilton
Tammy & Jim Hanan
Charles Harden
Drema A. Harden
Mike Hardy
Doug Hayden
Ina Hearst

Roger & Nita Hearst
Ed Heilman
Calvin Hilty
John Hughes
William D. Hurst
David & Elva Jay
Beryl Johnston
Lillian I. Johnston
David Jolly
Anne D. Jones
Fred & Martha Kaiser
Mike Kerrick
Robert Kreider
Vernon LaBau
Robert G. Lancaster
Lyle Laverty
Douglas R. Leisz
Tom Lennon

LIFE continued from page 8

George Leonard	Bill Possiel, NFF	Jean G. Setterholm	Richard H. Tubman
Thomas E. Lewis	Dave & Marlene Radloff	John B. Smith	Douglas G. Turner
Dean Lloyd	Del Radtke	Zane Smith Jr.	Randall K. Warner
Pat & Patty Lynch	Robert & Joyce Rehfeld	Robert P. Spivey	Karl F. Wenger
Vale Mack	Jim Reid	Lynn Sprague	Lillian Wenger
Eugene I. Majerowicz	Gray F. Reynolds	Al Aquires	Enes Wheeler
Floyd J. Murita	F. Dale Robertson	David M. Stack	Whit Whitfield
John Marker	Michael J. Rogers	Gary Stensatter	Robert W Williams
Dick Montague	Eldon W. Ross	Ted C. Stubblefield	Bill Worf
Donald H. Morton	Maynard Rost	Arnold F. Swanberg	Keeney Constr. Co
Marguerite Naanes	John Sandor	Vern Sylvester	Nat'l Smokejumpers Assoc.
David K. Nelson	Jack Saubert	Susan Talbot	Pacific NW F.S. Assoc.
Don Nelson Jr.	Al Schacht	Jack Ward Thomas	Pacific SW FSX Club
Robert Painter	Tom Schenarts	Christine Thompson	Region 4 Retirees Club
Charles Petersen	Ted Schlapfer	Tom Thompson	Nat'l Smokejumpers Assoc
Max Peterson	Gary Schneider	Gar Thorsrud	Snipes Farm & Nursery
Tom Pettigrew	Charles E. Schumacher	Robert Tokarczyk	Southern F.S. Retirees
Dick Pfilf	Judy L. Schutzta	David B. Trask	
John H. Poppino	David W. Scott	Jack Troyer	

2008 Financial Information

The Museum's 2008 financial records were audited by Junkermier, Clark, Campanella, Stevens, P.C., certified public accountants. Total revenues in 2008 were \$134, 875 and net assets on 12/31/2008 were \$1,144,852. Copies of the auditor's report are available upon request. The **2008 Operating Budget is shown below:**

Income		Expenses		Expenses	
Transfer from Operating Reserve	\$ 2,568	Asset Transfer	\$ 150	Admin Salary & Office Support	\$ 4,721
Realized Gains / Losses	(1,769)	Investment Expense	2,855	Curator Salary	25,084
Interest	17,355	Depreciation	1,537	Traveling Exhibit	1,847
Unrestricted Donations	12,899	Dues to other Groups	565	Consultants & Audit	9,000
Membership Dues	25,086	Employee Benefits	3,487	Travel	1,466
Store Sales	9,002	Insurance	2,007	Utilities	3,840
Misc.	3,395	Membership & Tradeshows	3,821	Misc	652
Total Income	68,536	Newsletter, Printing, Postage	5,766	Total Expenses	\$ 67,514
Cost of Goods Sold	1,022	Bldg. & Site Mtce	716		
Gross Profit	\$ 67,514			Net Income	\$ 0



Photos from Annual Meeting



Board Members Doug Leisz (left) & Steve Anderson



Karl Davidson (left) and Regional Director Tom Hamilton

ADDRESS:

P.O. Box 2772
Missoula, MT 59806

Phone: 406-541-6374

Fax: 406-541-8733

E-mail: nationalforest@montana.com

Visit our New web site
www.NMFS-History.net

National Museum of Forest Service History Board of Directors

President, Gray Reynolds
Deputy Chief, USFS (Ret)
Maryland

Vice-President, Dave Stack
District Ranger, R-1, USFS
(Ret.) Montana

Treasurer, Tom Pettigrew
Director of Engineering, R-1, USFS (Ret.), Montana

Secretary, Beryl Johnston
Director of Engineering, R-1, USFS (Ret.), Montana

Steven Anderson
President and CEO, Forest History Society, North Carolina

Keith Argow
CEO Nat'l Fire Lookout Assoc. Virginia

Richard Bacon
Deputy Regional Forester, R-1, USFS (Ret.), Montana

Dr. Perry Brown
Dean, College of Forestry & Conservation, University of Montana, Montana

Steve Bryant
Commercial Banker, First Interstate Bank, Montana

Larry Craig
New West Strategies
U.S. Senator (Ret.), Idaho

Arnie Didier
Northwest Sales Representative, Sashco, Montana

John Drake
Director, Wilderness, Recreation & Heritage, R-1, USFS (Ret.) Montana

Fred Haessler
Forest Products Manager, (Ret.) Georgia

Beryl Johnston
Director of Engineering, R-1, USFS (Ret.), Montana

Jim LaBau
Affiliate Faculty University of Alaska, Research Scientist, USFS PNW, (Ret.) Alaska

Douglas Leisz
Associate Chief, USFS (Ret.)
California

Pat Lynch
Founder, Western Heritage Company, Wyoming

R. Max Peterson
Chief Emeritus, USFS, Virginia

Dave Scott
Director, Recreation, R-6, USFS (Ret.), Oregon

Tony Schoonen
Chief of Staff, Boone and Crockett Club, Montana

Lynn Sprague
Regional Forester, R-5, USFS (Ret.) Idaho

Tom Thompson
Deputy Chief, USFS (Ret.)
Colorado

Jane Westenberger
Director, Public Affairs R-5 USFS (Ret.), New Mexico

Gary Brown, Emeritus
Montana State Forester (Ret)

Ex-Officio
Steve Kratville
Public & Government Relations, R-1, USFS, Montana

Jim Bedwell
Director, Recreation, Heritage and Volunteers, USFS Washington, DC

Bill Carey
Chairperson, Board of County Commissioners, Missoula County

John Engen
Mayor, Missoula